

# OFFICE SPACE FOR RENT

## WISMA WIM, TTDI KL



### Women's Institute of Management ATTRACTIVE RENTAL RATE—OFFICE LOTS

**1st Floor 1359 sq ft @ RM3.50psf**  
(with Vinyl Flooring, Shower Cubicle and Built in Cabinets)  
**3rd Floor 2137 sq ft @ RM2.50psf (with 3 rooms)**  
**Lunch @ atrium Monday-Friday 12:00pm-2:00pm**

In-house Seminar Rooms, Auditorium and Residential Block for rent. Surau, VIP Lounge, Toilet for Handicapped, Atrium, 24hr Gated Security, Ample Parking Lots, In-house Café, Walking Distance to Clinics, Pharmacy, Banks, Bus Stand, Jogging Parks, near MRT and a variety of Restaurants.

FOR ENQUIRIES / APPOINTMENT TO VIEW,  
KINDLY CALL:

**Ms Sze, Property Officer, 012-6330981**  
(whatsapp only)

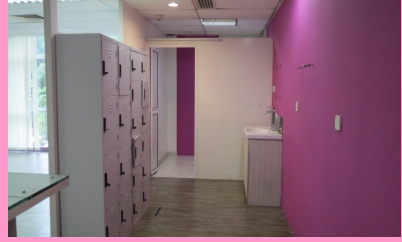
Tel No.: 03-7725 0268 / 7725 0288 / 7729 9909 /  
7727 3918

Email: [sze@wimnet.org.my](mailto:sze@wimnet.org.my) or  
[admin@wimnet.org.my](mailto:admin@wimnet.org.my)

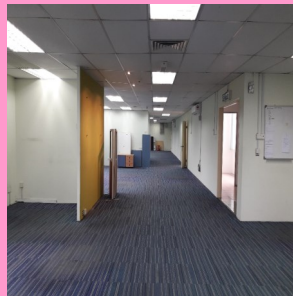
Address: 1st Floor, Wisma WIM,  
No. 7, Jalan Abang Haji Openg,  
Taman Tun Dr. Ismail,  
60000 Kuala Lumpur

Website: [www.wimnet.org.my](http://www.wimnet.org.my)

# OFFICE RENTAL



**1st Floor Office Space – 1359 sq ft**



**3th Floor Office Space – 2137 sq ft**